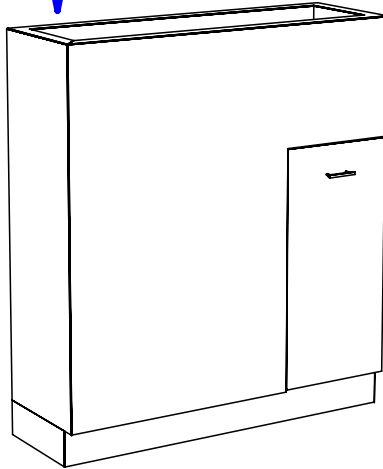


STEP 3. Mount towel cabinet to wall above backsplash with (4) 3" wood screws and beauty washers. Screw through interior of cabinet into wall studs.

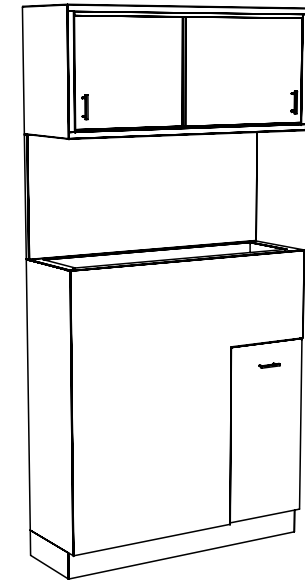


STEP 2. Attach backsplash to wall with liquid nail (construction adhesive). Apply a bead of silicone to seams to prevent water damage.



STEP 1. Set base cabinet in place against wall. Mount cabinet to wall with (4) 3" wood screws and beauty washers through interior of cabinet into wall studs. See diagram 9.

Note: Plumber needs to cut hole in back of cabinet and connect water supply.

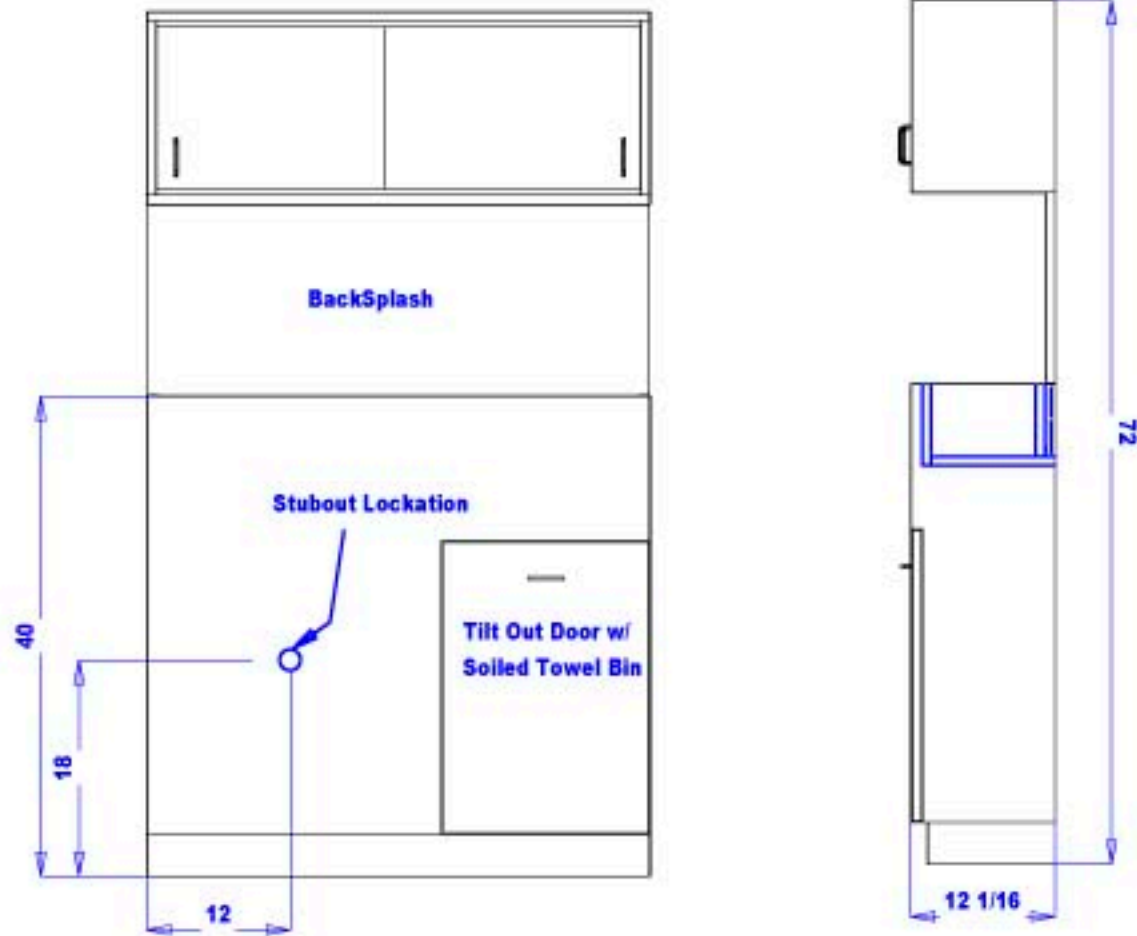


Finish Schedule -

Face Color -
 Top Color -
 Toe Color - (Specify)
 Pulls -
 Interior -
 Other (Specify) -

Collins Collins Manufacturing
 2000 Bowser Rd.
 Cookeville TN 38506

Title: Classic Shampoo Bulkhead		
Size:		Drawn By:
Date:		Sheet #:



Rough Plumbing Plan for Classic Shampoo Bulkheads #645-36 & 645-42 & 645-48

Finish Schedule

Face Color -
Top Color -
Toe Color -
Pulls -
Interior -
Other (Specify) -

Installation Notes:

1. All hardware needed for assembly is included.
2. Large items are preassembled at the factory to ensure proper alignment. Items are then disassembled into manageable sections for shipping purposes and ease of reassembly.
3. Shipping cleats need to be removed before installation. These cleats are installed to prevent damage.

collins

Collins Manufacturing
809 E 20th Street
Cookeville TN 38501

Title: **Classic Shampoo Bulkhead**

Size: _____ Drawn By: _____

Date: _____ Sheet # **4**